

Control lever systems

Control leverl 16RFA7.2



Features

- Sensitive regulation
- With friction
- For highly flexibly push/pull cables

Cable size U, travel code 2

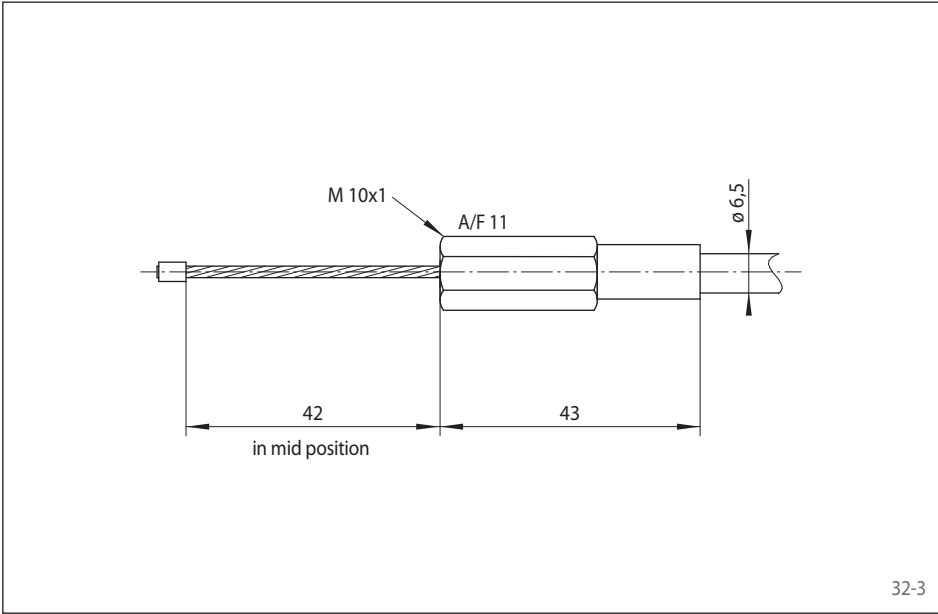
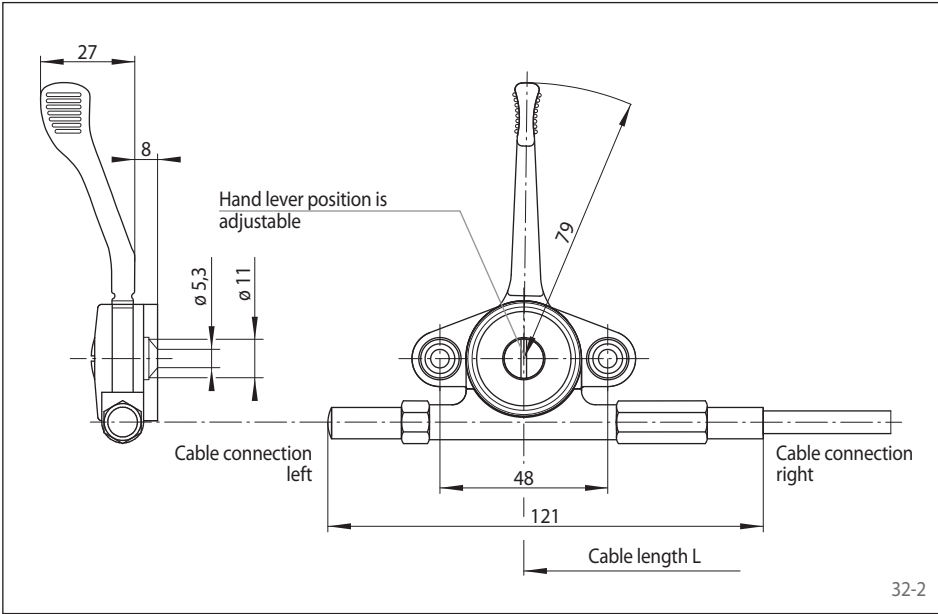
This control lever offers with its operating lever and the fine tunable friction the best prerequisite for sensitive adjustments, such as speed regulation of motors/hand throttle; with RCS® push/pull cables size U.

Maximum loads on the cable

Cable size U:	80 N
Maximum holding force:	80 N
Travel of the cable:	48 mm
Lever transmission:	1:4,3
Lever swiveling angle:	171°

Art.-No.:	Cable connection:
4561-002000-L00000	left
4561-002000-R00000	right

For more information on the design of the cable ends, see page 11 to 13.



Cable end MGD for connection to control lever 16RFA7.2

Control lever systems

Control lever 58.5 and 58.3



Features

- Adjustable friction
- Robust design
- Suitable for raw operation
- Connection for push/pull cables

Cable size V or L, travel code 3.15

The 58.5 and 58.3 series (with a catch in medium position) are equipped for adjustable friction and are suitable for their robust construction for mechanical remote adjustments also under raw operating conditions.

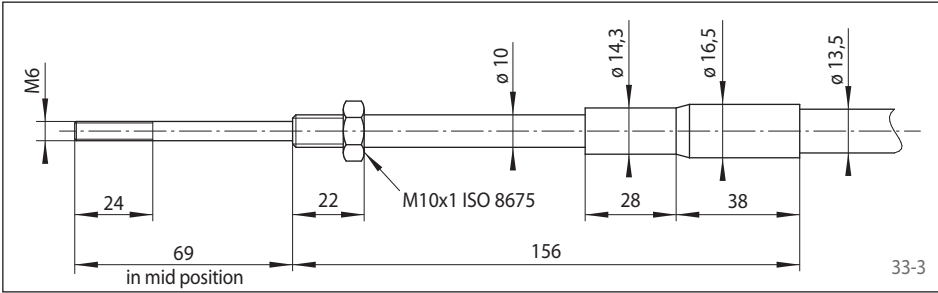
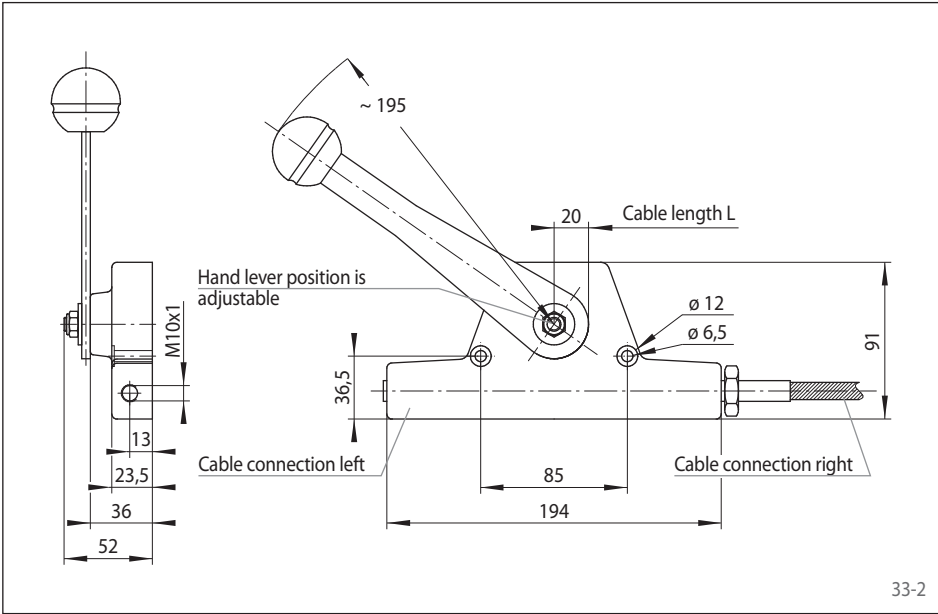
Maximum loads on the cable

Cable size V:	300 N
Cable size L:	500 N
Maximum holding force:	200 N
Travel of the cable:	80 mm
Lever transmission:	1:6
Lever swiveling angle:	170°

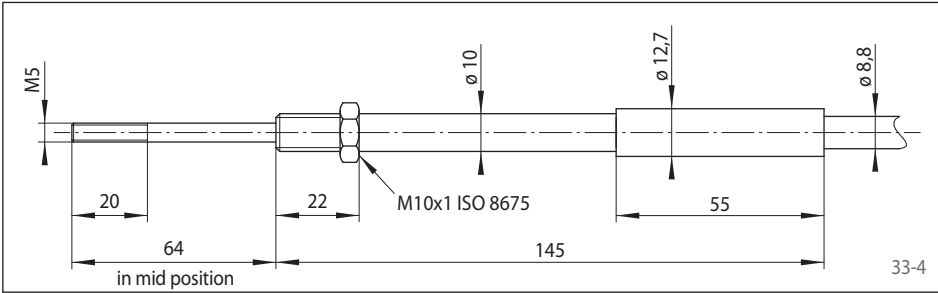
Art.-No.:	Cable connection:
4561-002011-000000	Type 58.5, left V / right L
4561-002012-000000	Type 58.5, left L / right V
4561-002015-000000	Type 58.3, left V / right L
4561-002016-000000	Type 58.3, left L / right V

For more information on the design of the cable ends, see page 11 to 13.

Cable end MGD size L for connection to control lever 58.5 and 58.3



Cable end MGD size V for connection to control lever 58.5 and 58.3



Friction control systems

Friction control 22.1

RINGSPANN®



34-1

Features

- Sensitive regulation
- With friction (adjustable)
- Travel 80 mm
- For push/pull cables 275-V and pull only cable 278-V

Maximum loads on the cable

Cable size 275/278-V: 500 N pull

Cable size 275-V: 50 N push

Maximum holding force: 250 N

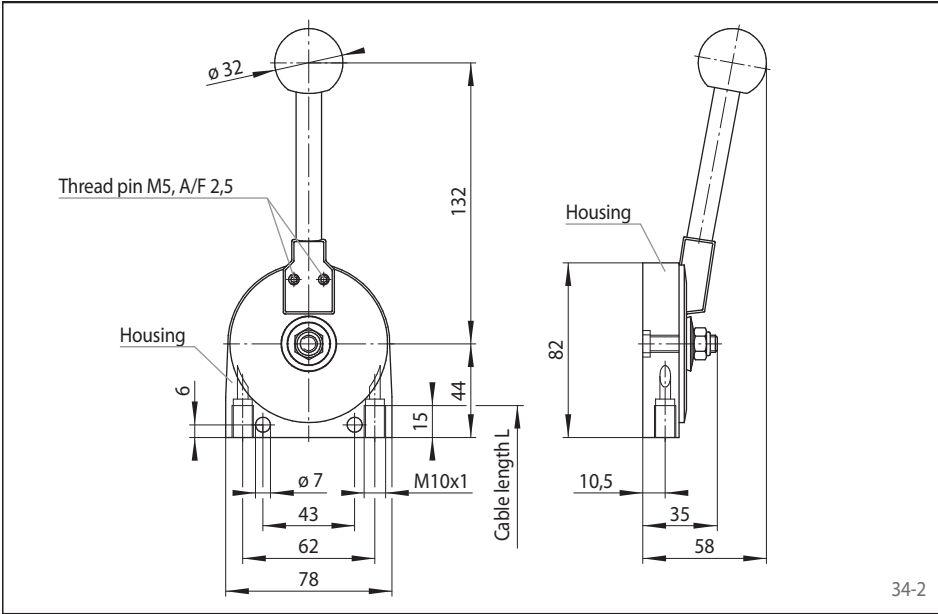
Travel of the cable: 80 mm

Lever transmission: 1:4,4

Lever swiveling angle: 156°

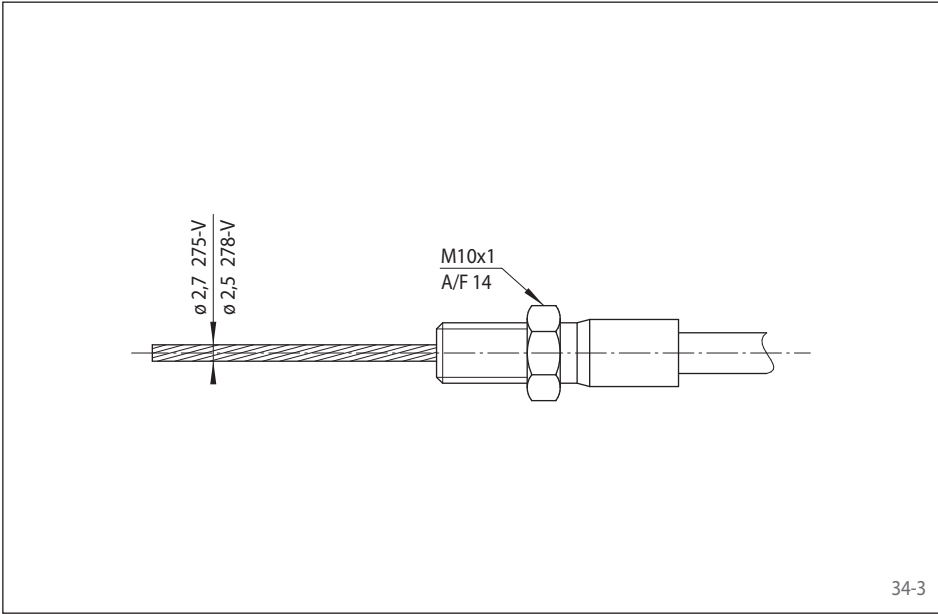
Art.-No.: 4561-002221

For more information on the design of the cable ends, see page 11 to 13, as well as page 39.



34-2

Cable end MGS for connection to friction control 22.1



34-3

Friction control systems

Friction control 22.3



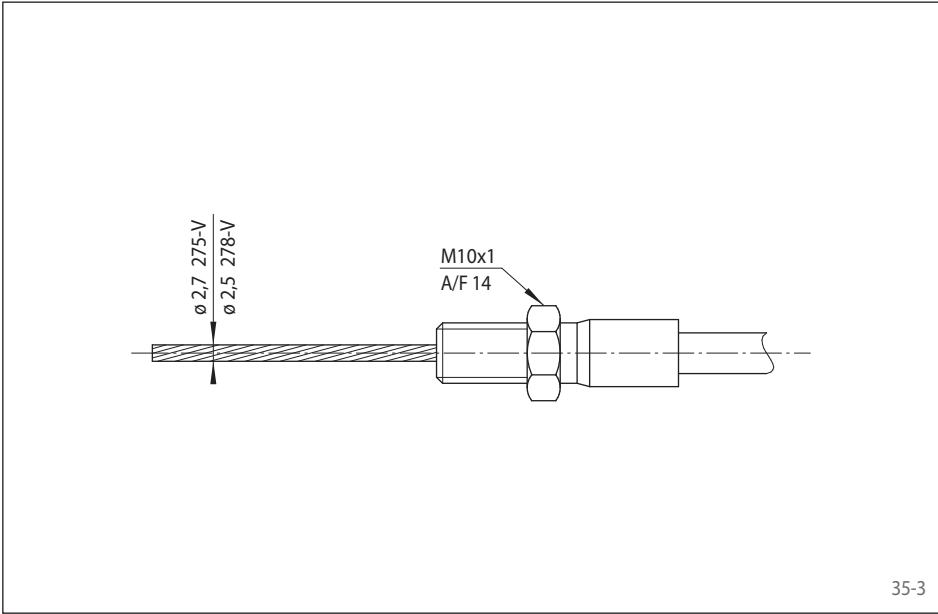
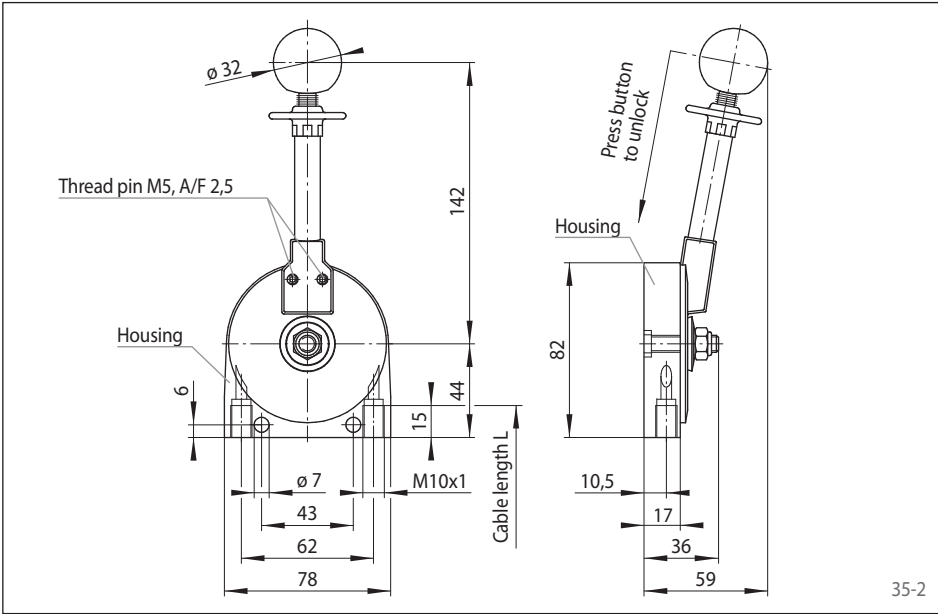
Features

- Sensitive regulation
- With locking and friction (adjustable)
- Travel 80 mm
- For push/pull cables 275-V and pull only cable 278-V

Maximum loads on the cable

Cable size 275/278-V:	500 N pull
Cable size 275-V:	50 N push
Maximum stopping force:	250 N
Travel at the cable:	80 mm
Lever transmission:	1:4,8
Lever swiveling angle:	156°
Art.-No.:	4561-002223

For more information on the design of the cable ends, see page 11 to 13, as well as page 39.



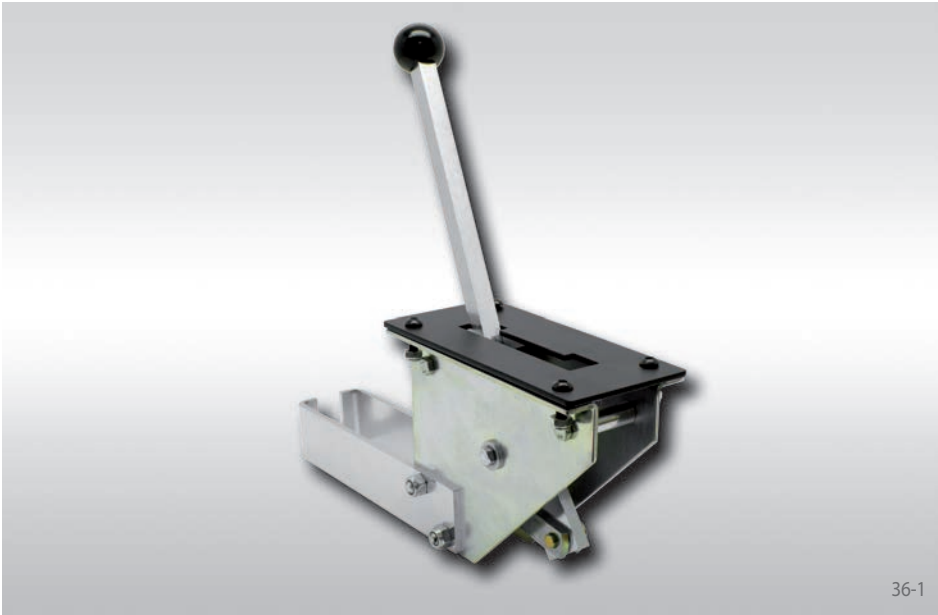
Cable end MGS for connection to friction control 22.3

Lever for general applications

MRC shift control

RINGSPANN®

RCS



36-1

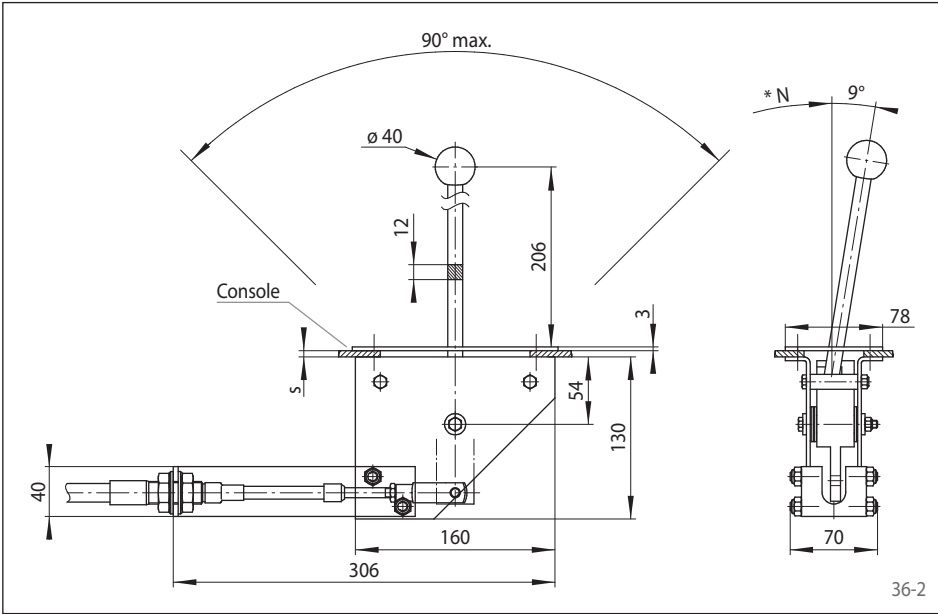
Features

- For two switch positions
- With a lock in both end positions
- For cable size M, travel 60 mm

Variable application due to costumers specifi-
able gate plate. The input lever is locked via the
gate plate.

Travel standard version:
60 mm, at console $s = 4$ mm

Can be used e.g. for gear switching on asphalt
road finishers or flap adjustment in the aviation
sector. In particular safety requirements are ful-
filled for the locking of the end positions.

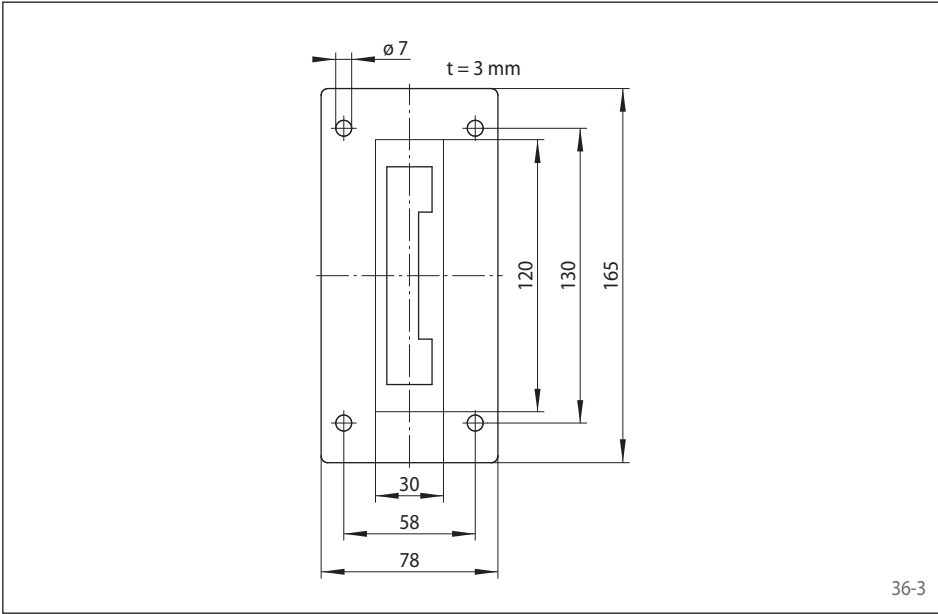


36-2

Cable series:	775/275/283
Cable size:	M
Connection:	T
Travel code:	3
F max.:	950 N
Lever transmission:	1:4,8
Section in console for standard splitter:	120 x 30 mm
Art.-No.:	4564-010039

Robust steel sheet construction, zinc-coated.
Large dimensioned bearing positions, mainten-
ance-free, for long service life and high opera-
ting safety.

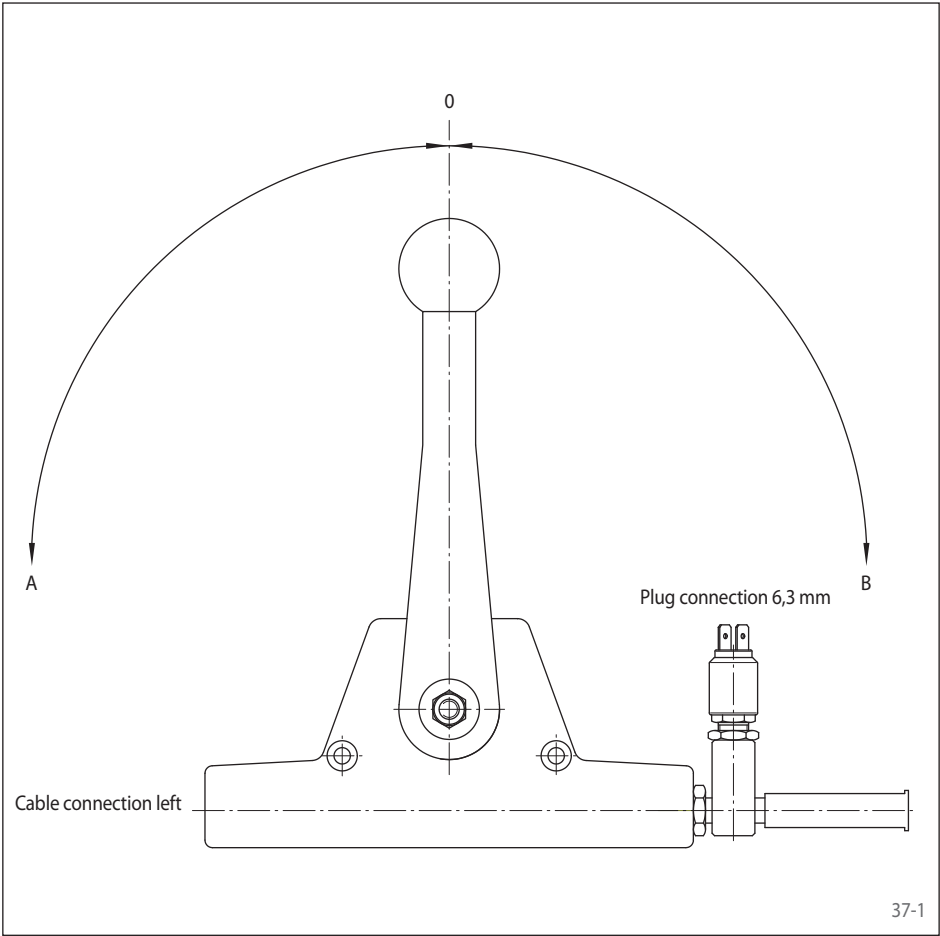
* Hand lever springs against N.



36-3

Accessories for control lever 58.x

RINGSPANN®



Electric switch for control lever 58.x

The 58.x series control levers can be equipped with an electric switch, which is operated independently of travel by a rod and additional electric functions such as reversing light, warning and safety switches and electrical auxiliary units.

Travel adjustment

0 -> A cable pulls

0 -> B cable pushes

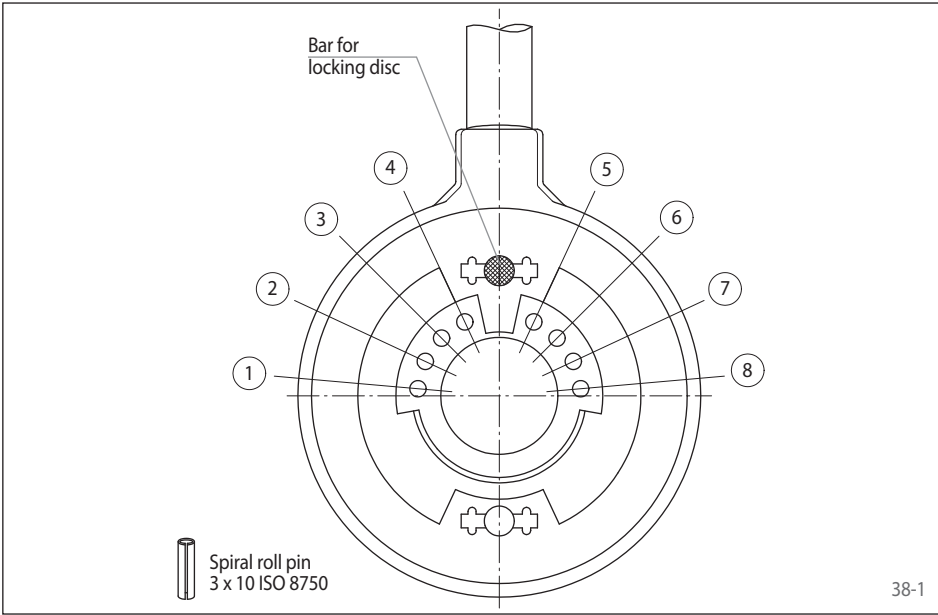
In positions 0 -> A the switch contact is open.

If the position 0 -> B is left, then the switch closes and remains closed.

Displayed is the cable connection left. When the cable connection is right, the functions are reversed.

max. switch voltage:	12 V
max. switch current:	10 A
max. switch capacity:	120 W

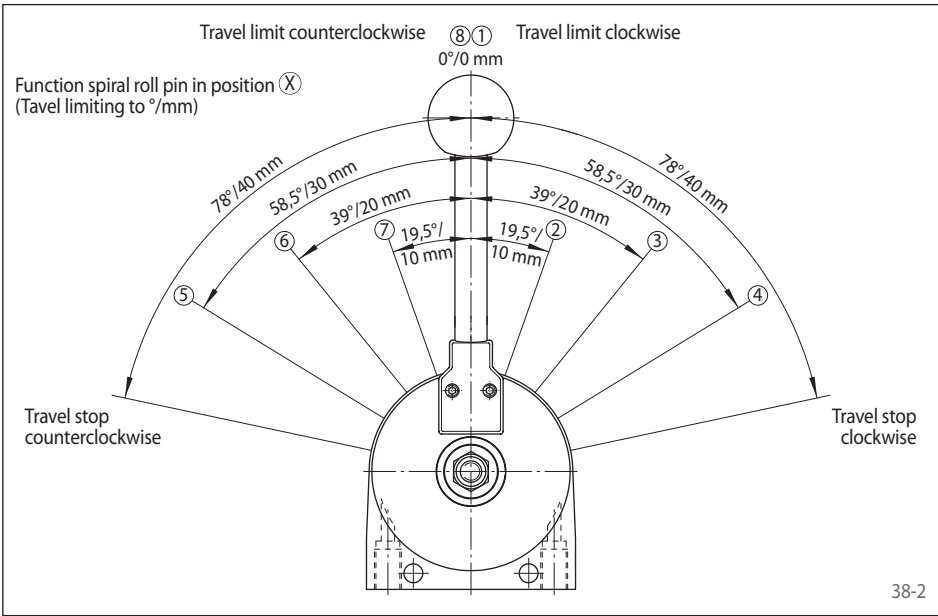
Accessories for friction control 22.x



Features

- Locking for 22.3 with a bar and locking disc
- Travel limiting using clamping pin(s)
- Adjustable friction

For more information on the design of the cable ends, see page 11 to 13.



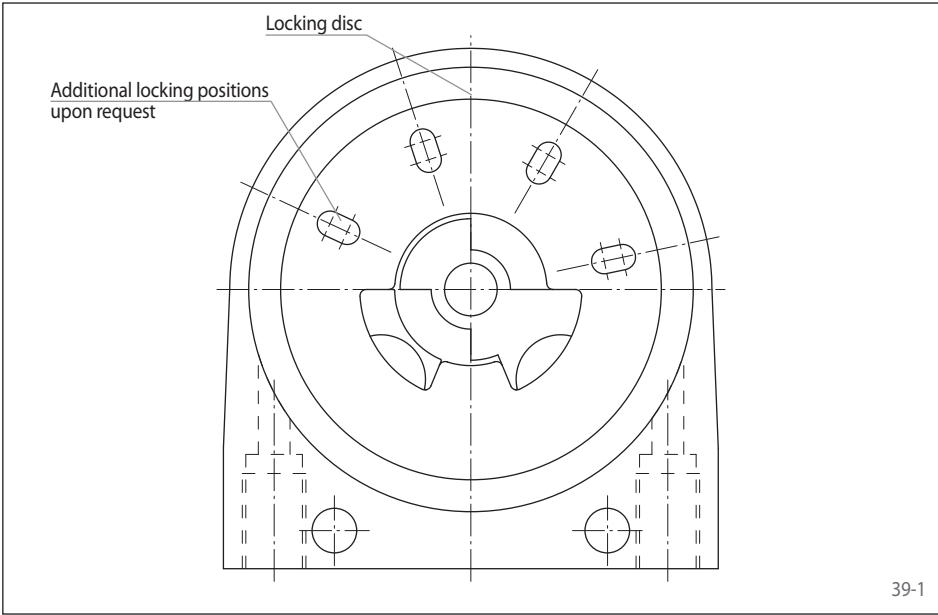
Travel limiting

From center position lever end stops after 78° = 40 mm cable travel clockwise and counterclockwise.

The lever end stops can be reduced individually in 10 mm steps with spiral roll pins.

Example:

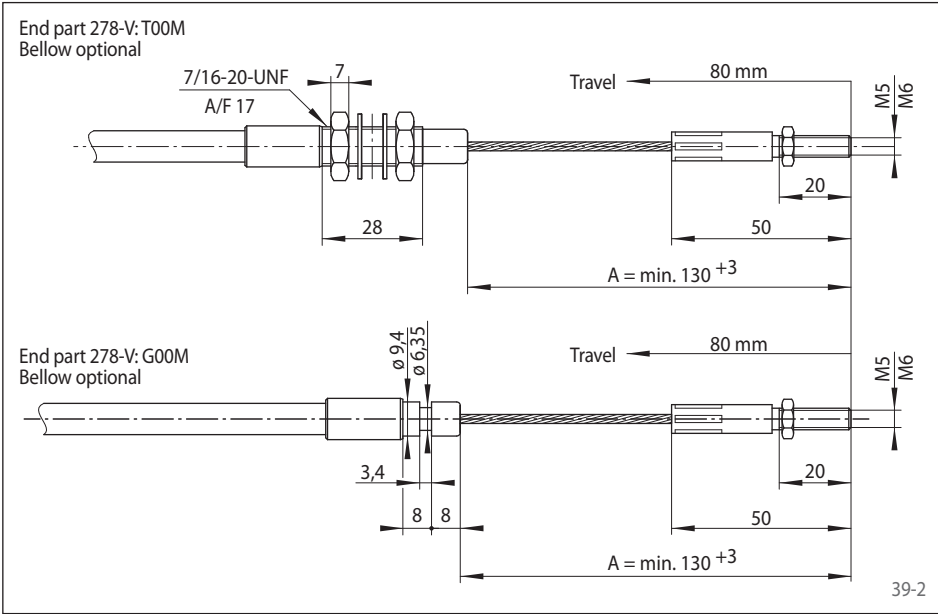
Pin position	Travel	Direction
4 + 5	+/-30 mm	symmetrical
3 + 6	+/-20 mm	symmetrical
2 + 7	+/-10 mm	symmetrical
8	+40 mm	clockwise
1	-40 mm	counterclockwise



Locking

Clear locking of the hand lever in the locking position of the disc.

Lever movement	Angle = Travel
Clockwise	29,8° = 15,3 mm
Clockwise	77,6° = 39,8 mm
Counterclockwise	18,0° = 9,2 mm
Counterclockwise	65,6° = 33,6 mm



Open ends

- Pulling strands made from stainless steel
- Sealing available with optional bellow

Order key for push/pull cables
for control lever systems



Features

Order code: 283 - U - MGD / T 05 M - 2 - 0200

Cable serie:

283, 275, 278, 775 and 778

Cable size:

Selection according to operating forces,
connection threads, bend radii etc.:
U, V or L

Cable connection to lever:

Cable output side:

In accordance with installation conditions T, G, S, R, 03, 04 or 08

Wiper seal:

See catalogue page 10

Thread at rod end:

M for metric,
Z for inch (UNF) thread

Travel code:

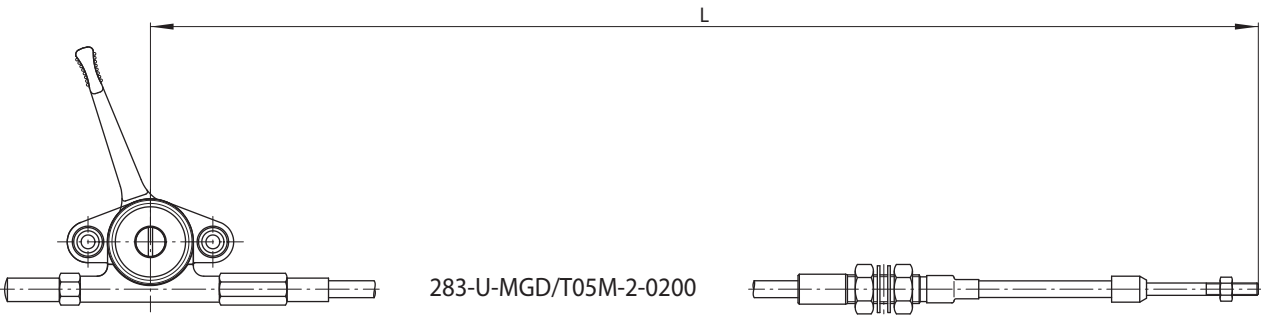
The following values are possible as travel code,
in compliance with a travel in mm:

Type	Travel code	Travel
16RFA7.2	2	48 mm
58.x	3.15	80 mm
22.x	3.15	80 mm

Cable length:

Entire length, denoted in cm,
principally 4-figure:
e. g.: 3 400 mm = -0340
e. g.: 5 m = -0500

Correct spelling:



Notes

RINGSPANN®

